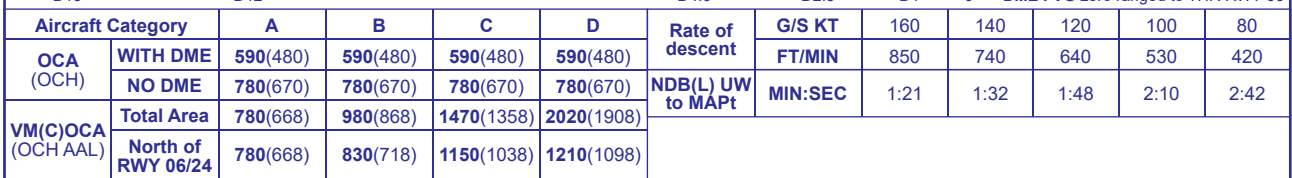
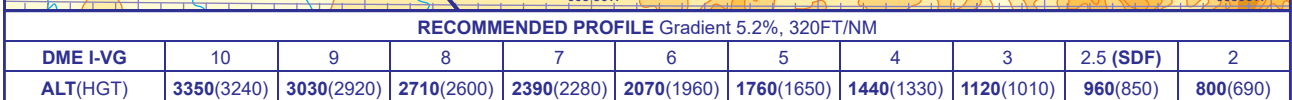


EDINBURGH
LOC/DME/NDB(L)
RWY 06
(ACFT CAT A,B,C,D)



AIRCRAFT UNABLE TO RECEIVE DME Radar ranges will be provided at the equivalent of D15 outbound on the racetrack and D12 inbound. Turn right to intercept the LOC. When established, descend at equivalent of D12 inbound to **not below 1140(1030)** until overhead NDB(L) UW, then continue descent to MDH.

NOTE See AD22-11 d and 4 a for speed restrictions.

AERO INFO DATE 12 MAY 25

AD 2-EGPH-8-2